

Thomas C. Boushall, Chairman of the Board of the Bank of Virginia, delivered the graduation address on Thursday morning.

Executive Secretary Richard R. Fletcher headed up the College administration and staff as President, with Division Commander John S. Cluss (Epsilon, Bethany) serving as Dean of the Faculty and discussion leader for the all-day Division Commander's session that preceded the conference. Assistant Executive Secretary Gerald R. Sherratt acted as Dean of the College, and members of the High Council served the school on the Board of Visitors. Administrative Assistant N.J.L. Starling acted as Director of Admissions, and Staff Assistants Maurice Littlefield and Alan Wheeler served as Deans of Student and Educational Services, respectively.

The teaching staff of the College of Chapters was composed of Division Commanders and selected members of Sigma Nu's collegiate chapters. Known as Teaching Fellows, the list of collegiate instructors included Roy Maynard Adams (Delta Kappa, Delaware), Carl G. Berry (Delta Omicron, Idaho), Dennis B. Carroll (Gamma Mu, Illinois), Charles Hawkins (Zeta Zeta, Florida State), Hubert "Hub" Hawthorn (Zeta Psi, Lamar Tech), Alfred Jon Olsen (Epsilon Alpha, Arizona), and G. David Schiering (Beta Beta, DePauw). Also assisting were: Lum Hawthorn (Zeta Psi, Lamar Tech), David Hossler (Epsilon Alpha, Arizona) and Mike Larriva (Epsilon Alpha, Arizona).

Special teaching assignments were handled by several guest faculty members. They were: Arthur Ben Chitty (Beta Omicron, Sewanee), Director of Public Relations for the University of the South; Robert H. Stanley (Epsilon Gamma, Wesleyan), Coordinator of Student Affairs for the General Motors Institute; Grand Chaplain Richard L. Sturgis (Beta Omicron, Sewanee), Rector, Mission Church, Greenville, South Carolina; and Terry R. Ashton (Epsilon Pi, U.C.L.A.), Assistant to the Dean, U.C.L.A.

Tours of the Fraternity's General Headquarters and the grounds of the Virginia Military Institute were scheduled during the Conference for those interested in learning more about Sigma Nu's Lexington heritage. Also available for information purposes was a display of chapter publications, General Fraternity printed material robes, and other items of general interest.

ETA ZETA INSTALLED

Sigma Nu gained its 127th active chapter on May 13, 1961, when the Sigma Nu Colony at Louisiana Polytechnic Institute added its name to the Fraternity's chapter roll. The new chapter carries the name Eta Zeta.

Pledging ceremonies, culminating a year's work on the part of the Louisiana Tech colonists, were conducted on Friday, May 12 by a ritual team from Zeta Psi Chapter at Lamar Tech in Beaumont, Texas under the direction of Hubert Hawthorn,

Zeta Psi Chapter Commander. The initiatory ceremony was enacted on Saturday afternoon by members of Phi Chapter from the Louisiana State University at Baton Rouge.

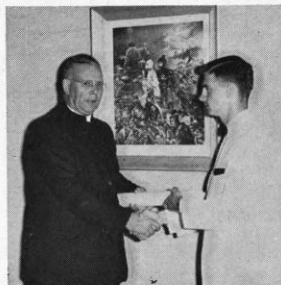
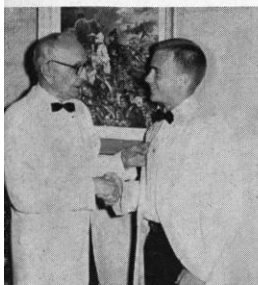
A welcome banquet followed the Saturday afternoon initiatory ceremonies. Guests at the affair included Louisiana Tech President R. L. Ropp, Dean of Men S. X. Lewis, and Assistant to the Dean E. S. Foster. Staff Assistants Terry Ashton and Maurice Littlefield from the Fraternity's International Headquarters in Lexington, Virginia and Grand Chaplain Richard L. Sturgis, Jr. (Beta Omicron, Sewanee) represented the Fraternity at the gathering which was attended by the initiates, their families and friends.

Members of Alpha Chi Omega Sorority presented a desk pen set to the chapter as a token of their esteem during the celebration, while the local Kappa Delta Sorority Chapter had presented a folding table to Eta Zeta earlier which was used in the pledging and initiation ceremonies.

The high point of the banquet program was an address by Dean Emeritus C. A. Ives (Phi, Louisiana), longtime dean at Louisiana State, and ardent worker for the establishment of a Sigma Nu chapter at Louisiana Tech and the strengthening of the Fraternity throughout Louisiana. Dean Ives emphasized the importance of fraternities, and challenged the new chapter to conduct its affairs in such a way as to help better the entire fraternity system. "I believe in college fraternities because I believe in youth," he said. "Youth needs companionship of an



LOUISIANA TECH INSTALLATION: Above, left, charter initiates of Eta Zeta Chapter pose with their newly acquired Charter and their Chapter Advisers. Below, far left, longtime Sigma Nu Dean Ives inspects the new badge of an Eta Zeta member. Below, left, Grand Chaplain Sturgis presents the charter. Below, Dean Ives receives a plaque from Phi Chapter initiates in appreciation for his many years of service.



intimate kind, and constant repetition of ideals and basic tenets. This the fraternity chapter provides."

"Fraternalities are needed now more than ever," he continued, "because of the great mass of students on the campus, and because the pace of modern life handicaps parents in overseeing and counseling their children. Louisiana is grateful for the attention it is receiving from the Sigma Nu Fraternity. This new chapter at Louisiana Tech will tap virgin soil and will bring into the Fraternity men of the sturdy American stock that has made America great."

"The hill parishes in North Louisiana have long been an enclave where pure Americanism has been maintained. The people are God fearing, industrious, and unspoiled by the false 'isms' of modern times. I expect them to make a contribution to our Fraternity."

Grand Chaplain Sturgis presented the charter for the new chapter to Eta Zeta Commander Byron Pipes in a brief ceremony following the address by Dean Ives. The Rev. Wayne Gray (Epsilon Sigma, Southwestern) from Monroe, Louisiana closed the ceremonies with a benediction.

Initiates of the new chapter include charter members Bill Alsbrooks, Charles Chadbourn, III, Charles Dunlap, Fred Kellogg, Van Marsh, Raymond Norre, James Pelton, Byron Pipes, Aubrey Shepherd, Stafford Vallery, Bob Vincent, David Wilson, and David Wylie. Pledges are Robert Barrett, Douglas Bass, Harold Crowell, Jon Feerick, David Rankin, and Mike Waddey.

IDAHO STATE CEREMONY

On May 20, 1961, Sigma Nu joined the fraternity system of Idaho State College in Pocatello, Idaho, when it installed Sigma Nu Alpha Colony as Eta Eta Chapter. Sixteen men were initiated into the Fraternity as charter members of Sigma Nu's second Idaho chapter.

The installation weekend began on Friday evening, May 19 with an installation gala produced by members of neighboring Epsilon Upsilon Chapter at Utah State University. Directed by Division Commander Eugene Tuellet and Assistant Executive Secretary Gerald R. Sherratt, the entertaining program revolved around the theme "A Salute to Idaho State."

A luncheon for Sigma Nu members and alumni on Saturday preceded the Initiation ceremonies which were set at the B.P.O.E. Lodge hall in downtown Pocatello. Members of Delta Omicron Chapter at the University of Idaho performed the ritual, which began at 3:00 p.m.

On Saturday evening, the new chapter was formally installed by Vice-Regent David C. Baum of La Grande, Oregon. Following the banquet ceremonies, a reception was held in the Pioneer Room of the Bannock Hotel for guests of Eta Eta Chapter who attended the installation and initiation festivities. An Installation Ball in the Bannock Hotel Ballroom after the reception brought Saturday's events to a close.

On Sunday morning, Sigma Nu members and their guests attended church

services at St. Andrews Chapel on the Idaho State Campus.

Honored during the installation weekend were two friends of the new Sigma Nu Chapter. Dr. Frank Tate, then on the staff of Idaho State College, and now a member of the staff of Colorado State College, was recognized for his year of service spent as Adviser to the Sigma Nu Alpha Colony. Dr. Tate attended all of the meetings of the colony before its installation, and allowed the group to use his home many times for a meeting place. Also honored was Herbert L. Glindeman, a member of Delta Omicron Chapter at the University of Idaho, who was recognized on his retirement from the Pocatello, Idaho school system after 30 years of service.

Robert Jones, Eta Eta No. 1, was Commander of the group through the colonization period. New officers are: Chester F. Knotts, Commander, with Frank E. Kessler serving as Lieutenant Commander. Other newly elected officers are Richard Miller, Dale Bliss, Melvin Rieken, Michael Tuck, Gerald King, Layton Severson, Gary Bonar, and Wayne Barsness. Francis Bistline, prominent Pocatello attorney and Delta Omicron alumnus, serves the new chapter as President of the House Corporation.

Special guests at the series of events included Vice-Regent Baum, Executive Secretary Richard R. Fletcher, Assistant Executive Secretary Gerald Sherratt, and Division 24 (West) Commander Eugene Tuellet. Other special guests were Mr. Melvin Schubert, Dean of Students, and Miss Clara Otnes, Dean of Women.



IDAHO STATE INSTALLATION: Above, the Sigma Nu Alpha colony at Idaho State, including members, pledges, and special guests on hand for the initiation ceremonies. Above, right, officers of the new chapter. Right, Sigma Nu ventriloquist Jimmy Judd (Utah State) entertains at the pre-initiation gala. Far right, charter initiates of Eta Eta Chapter.

